



# **Cats on Cooch June 6<sup>th</sup>- 8<sup>th</sup> 2025**

## **Champlain Sailing Club, Orillia, Ontario**

### **Sailing Instructions**



*The notation*

*[DP] in a rule in the SI means that the penalty for a breach of that rule may, at the discretion of the protest committee, be less than disqualification.*

#### **1.0 RULES**

The regatta will be governed by the rules as defined in *The Racing Rules of Sailing*.

#### **2.0 ADMITTANCE**

These rules are intended to allow a wide range of beach catamarans to race together. Boats from established classes and under with class rules must comply with their class rules.

#### **3.0 NOTICES TO COMPETITORS**

Notices to competitors will be posted on the official notice board on CSC clubhouse deck.

#### **4.0 CHANGES TO SAILING INSTRUCTIONS**

Any change to the sailing instructions will be posted before 0900 on the day it will take effect, except that any change to the schedule of races will be posted by 1800 on the day before it will take effect.

#### **5.0 SIGNALS MADE ASHORE**

There will be no signals ashore. You can see the start line from the club.

#### **6.1 SCHEDULE**

Friday June 6<sup>th</sup> is a practice day for those who arrive early. There are no official races on Friday.

#### **6.2 Registration:**

Registration will be held outside the CSC clubhouse from  
08:00 – 9:30 on Saturday, June 7<sup>th</sup>

#### **6.3 Competitors' Meetings:**

0930 Saturday, June 7<sup>th</sup> at the CSC clubhouse.

#### **6.4 Racing Schedule:**

Saturday June 7<sup>th</sup> -Warning Signal at 10:30 am

Sunday June 8<sup>th</sup> - Warning Signal at 10:30 am

**6.5 Number of races:** The race committee shall attempt to run as many races as possible each day in consideration of the weather conditions and the safety of the competitors. Race target times will be approximately 30 - 40 minutes.

**6.6** On the last day of the regatta no warning signal will be made after 1400.

#### **7.0 CLASS FLAGS AND INITIAL ORDER OF STARTS**

There will be no separate class races. The class flag is a solid blue. All boats regardless of rating will start together and sail the same course.

## 8.0 RACING AREAS

### Saturday RACES – “around the cans” racing

Racing area will be in Lake Coochiching, about 1500m NE from the club. The courses will be roughly in the centre of section of lake below Chiefs Island.

### Sunday Races -long distance racing.

Each race will count as 1 race. We may have time for 1 or 2 long races as weather and time permit.

- Starting Line will be just north of the mouth of Pumpkin Bay. The race course will use only the navigation markers in the lake.
- Route will be from start/finish line toward Horseshoe Island keep red navigation marker to port passing to the east side of Horseshoe Island
- Continue north toward the YMCA CAMP keeping all three red markers (S294, S296, S298) to port.
- Round the starboard bifurcation red /green marker SC keeping it to port.
- Return leg is through the gap west of Chiefs Island, keeping red markers, SC2 & SC4 to starboard and keeping green markers SC5 & SC7 to port.
- See course configuration in appendix A.

## 9.1 THE COURSES

9.2 The diagrams in Appendix A show the courses, including the approximate angles between legs, the order in which marks are to be passed and the side on which each mark is to left.

9.3 Only courses 1 will be used. A gate will be used except on the long distance course. The “G” and “O” options will not be displayed by the signal boat.

9.4 The number of laps will be displayed on a white board on the signal boat.

9.5 The gate will be ignored on the first leg and final leg of each race.

## 10.1 MARKS

10.2 Mark A and gates will be **orange tetrahedron inflatables**.

10.3 Depending on # of boats it may be decided to have no offset mark.

10.4 The starting and finishing line will be marked with a **yellow ball** staff on the port end and the **signal boat** at the starboard end.

10.5 If mark A is not present the **mark boat** displaying the “M” flag will be the A mark..

10.6 If either of the gate marks is missing, the remaining mark will be rounded to port.

The gate is ignored on the signal boat finishing leg of each race.

## 11.1 THE START

11.2 The starting line will be between the mast of the **signal boat** and the starting mark (**yellow ball**).

11.3 Boats whose warning signal has not been made shall avoid the starting area during the starting sequence for other races. The starting area is defined as an area extending approximately 100 feet in all directions from the starting line. [DP]

11.4 A boat that does not start within five (5) minutes after her starting signal will be scored Did Not Start without a hearing. *This changes rule RRS A4 and A5.*

## **12.1 CHANGE OF THE NEXT LEG OF THE COURSE**

12.2 To change the next leg of the course, the race committee will lay a new mark (or move the finishing line) and remove the original mark as soon as practical. When in a subsequent change a new mark is replaced, it will be replaced by an original mark.

12.3 Except at a gate, boats shall pass between the race committee boat signalling the change of the next leg and the nearby mark, leaving the mark to port and the race committee boat to starboard. This changes RRS 28.

12.4 In the event of the next leg of the course mark A1 will not be relocated. All divisions shall round the new mark 1 leaving it to port.

## **13.0 THE FINISH**

The finishing line will be between a staff displaying an orange flag on the signal boat and the finishing mark.

## **14.0 PENALTY SYSTEM**

RRS 44.1 is changed so that the Two-Turns Penalty is replaced by the One-Turn Penalty.

## **15.1 TIME LIMITS**

15.2 Time limits are as follows:

Time limit - 90 minutes

Mark A time limit – 30 minutes

If no boat has passed Mark A within the Mark A time limit the race will be abandoned. Failure to meet the target time will not be grounds for redress. *This changes RRS 62.1(a).*

15.3 Boats failing to finish within 30 minutes after the first boat in their class sails the course and finishes will be scored Did Not Finish. This changes RRS 35, A4 and A5.

15.4 The Race Committee may, at its discretion, award points to a boat, equivalent to the boat's position in a race. The Race Committee determines the method and order. This changes RRS 35, A4 and A5.

## **16.1 PROTESTS AND REQUESTS FOR REDRESS**

The protest committee will be selected prior to the first race.

16.2 Protest forms are available at the official notice board or at the protest desk. Protests and requests for redress shall be delivered to the protest desk within the appropriate time limit.

16.3 For each class, the protest time limit is 60 minutes after the signal boat has docked after the last race of the day.

16.4 Notices will be posted no later than 15 minutes after the protest time limit to inform competitors of hearings in which they are parties or named as witnesses. Hearings will be held in the clubhouse, beginning at the time posted on the official notice board.

16.5 A boat protesting another boat shall follow RRS 61.1(a) with the following modification: A protest flag is not required for any class. *This changes RRS 61.1(a)(2).*

16.6 Notices of protests by the race committee or protest committee will be posted to inform boats under RRS 61.1(b).

16.7 Breaches of F18 Class Rule C.5.1(a)(3) (mandatory tow line requirement), and Sailing Instructions 10.2, 17, 20 and 21 will not be grounds for a protest by a boat. *This changes RRS 60.1(a).*

16.6 On the last scheduled day of racing a request for redress based on a protest committee decision shall be delivered no later than 30 minutes after the decision was posted. *This changes RRS 62.2.*

### **17.1 SCORING**

17.2 For the High and Low Fleet classes, the current ISAF SCHRS numbers shall be used.

17.3 One (1) race is required to be completed to constitute a series.

17.4 (a) When fewer than five (5) races have been completed, a boat's series score will be the total of her race scores.

(b) When five (5) or more races have been completed, a boat's series score will be the total of her race scores excluding her worst score.

17.5 To be scored your boat shall be listed with a handicap on the official SCHRS web site (<https://schrs.com/ratings.html>)

### **18.1 SAFETY REGULATIONS**

18.2 Boats shall check in by hailing their sail numbers to the committee boat before the start of the first race each day and the first race following any postponement ashore. [DP]

18.3 A boat that retires from a race shall notify the race committee as soon as possible. [DP]

### **19.1 REPLACEMENT OF CREW OR EQUIPMENT**

19.2 Substitution of competitors will not be allowed without prior approval of the Race Committee. [DP]

19.3 Substitution of damaged or lost equipment will not be allowed unless approved by the Race Committee. Requests for substitution shall be made to the committee at the first reasonable opportunity. [DP]

### **20.1 EQUIPMENT AND MEASUREMENT CHECKS**

20.2 A boat or equipment may be inspected at any time for compliance with the class rules and sailing instructions. On the water, a boat can be instructed by a member of the race committee to proceed immediately to a designated area for inspection.

### **21.0 GARBAGE DISPOSAL**

Boats shall not put garbage in the water. Garbage may be placed aboard support and race committee boats. [DP]

### **22.1 RADIO COMMUNICATION**

22.2 Except in an emergency, a boat that is racing shall not make voice or data transmissions and shall not receive voice or data communications not available to all boats. [DP] Use **channel 69**.

### **23.0 PRIZES**

Prizes will be awarded at the conclusion of racing on the last day. At a minimum there will be the following take home trophies:

1<sup>st</sup> and 2<sup>nd</sup> Place for HIGH HC fleet -

1<sup>st</sup> and 2<sup>nd</sup> Place for Low HC fleet -

1<sup>st</sup> Finishers for both HIGH and LOW fleet will BOTH be presented with CATS ON COOCH

Prize also may be awarded depending on responses from sponsors.

## **24.0 DISCLAIMER OF LIABILITY**

Competitors participate in the regatta entirely at their own risk. See Rule 4, Decision to Race. The organizing authority will not accept any liability for material damage or personal injury or death sustained in conjunction with or prior to, during or after the regatta.

## **25.0 INSURANCE**

Each participating boat shall be insured with valid third-party liability insurance with a minimum cover of 1,000,000 CAD per incident or the equivalent.

## **25.0 SPECIAL NOTES**

25.1 The race committee will not answer any questions from a competitor on the water.

25.2 Any boat receiving 'hands on' assistance from rescue/mark boats will be scored Did Not Finish.

*This changes rule A5.* The race committee may decide when a boat or crew needs assistance.

25.3 SPORTSMANSHIP: The race committee may request redress for competitors who exhibit extraordinary sportsmanship.

## **ADDITIONAL SAFETY NOTES TO ALL SAILORS**

### **GENERAL**

If wind, wave, or water conditions make you doubtful of your ability to handle the conditions, please retire from the race.

### **ELECTRICAL POWER LINES – AVOID !!!**

Before raising the mast, and always while sailing, check for and avoid low overhead electrical power lines. If you see a power line, AVOID IT! A MAST COMING IN CONTACT OR EVEN NEAR AN ELECTRICAL POWER LINE CAN CAUSE SERIOUS INJURY OR DEATH TO PEOPLE ON OR TOUCHING THE BOAT.

### **SPECIAL NOTES:**

1. We use the standard starting flags. The "P" flag with horn will signal that the next race is imminent.
2. We are a relaxed club, expect minimal protests a self-policing race.
3. If you are unfamiliar with the race flags, make it known before the race. We will have a refresher meeting Friday evening.
4. No one talks to RC or the mark boat between the class up and the finish of the race.
5. If you don't get a sound when you finish, don't worry, we may be busy
6. If you are finishing with multiple boats, please try to make a mental note of which position you think you finished in that pack, as the flagship crew may not catch your sail number
7. If you don't have a number on your sail, you'll need a number on your hull
8. We MAY tell you if you are the individual over-early-it is not a requirement  
P flag v.s. I flag, we may be forced to use it.
9. Target time will be 30 – 40 min -using a 4 leg race
10. If you are leaving the course for any reason, please do your best to notify someone from RC and let them know so we are searching for you, at the very least, talk to the beach captain.

## APPENDIX "A"

### Racecourse Configurations

#### **COURSE 1 (Saturday)**

- |  |
|--|
| 2 Legs - Start - A - Finish                |
| 4 Legs – Start - A - G - A - G - Finish    |
| 6 Legs – Start - A - G - A - G -A – Finish |



A = the weather mark for all fleets

G = the gate (note gate may be substituted with a single leeward mark)

**(The gate is ignored on the first leg and the final leg**

Depending on wind speed there will be 2, 4, or 6 legs.

The Race Officers will adjust the course to a upwind first leg if the wind direction changes substantially.

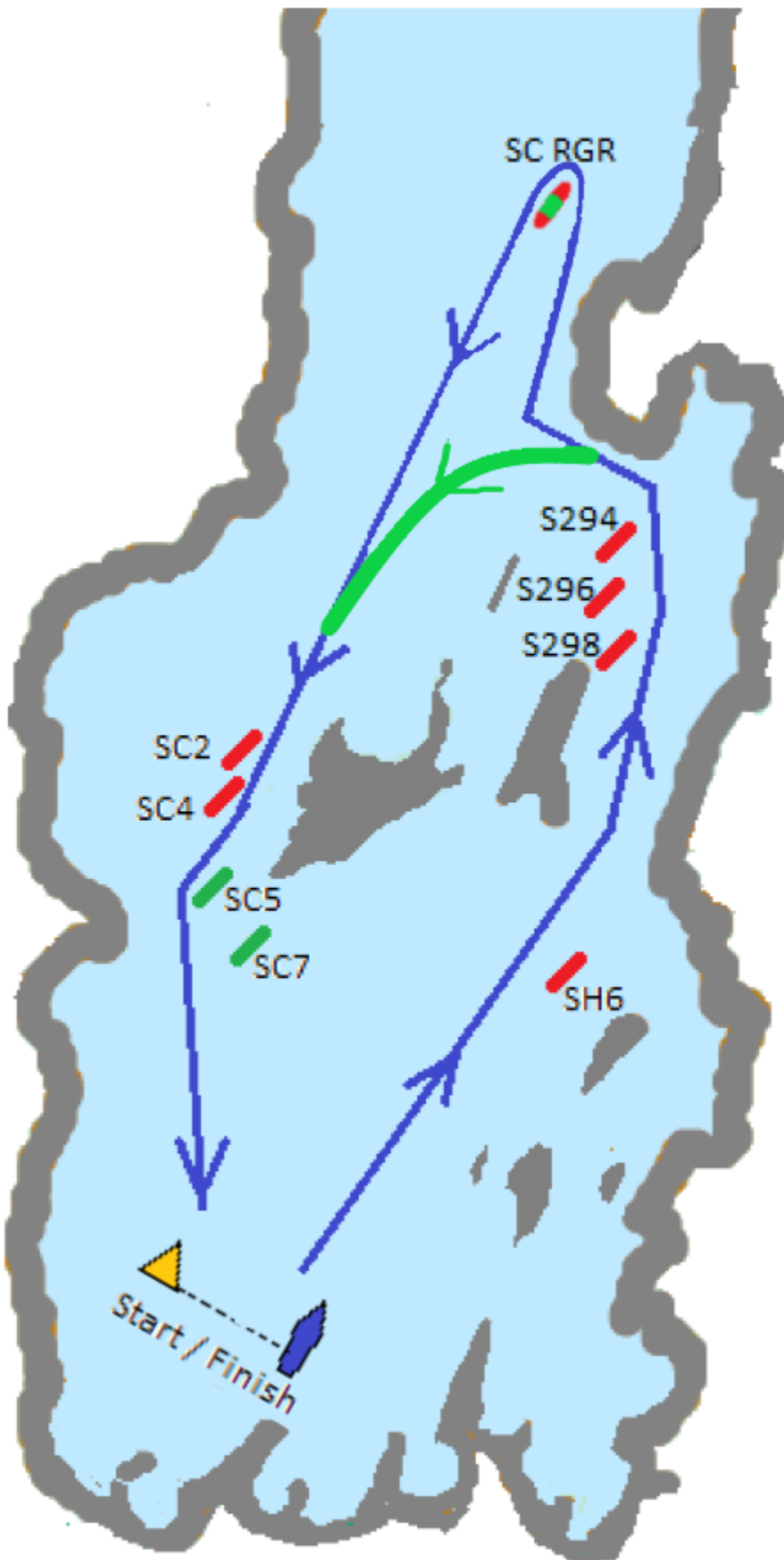
## ***COURSE- LONG RACE***

Start- SH 6 (to starb.)

-S298 ,S294 & S292 (to port)

- SCRGR (to Port ) - SC2 & SC4 (to starb.)

-SC5 (to port) - SC7 (to port) - Finish



Regardless of wind direction in this race the starting line will be facing roughly NE ie perpendicular to the blue line shown on the map.



Green line indicates the SHORT-CUT for NON-Spinnaker Boats.